

Perimeter-based Coverage Optimization to Improve Lifetime in Wireless Sensor Networks

Ali Kadhun Idrees^a, Karine Deschinkel^{a*}, Michel Salomon^a and Raphaël Couturier^a
^a*FEMTO-ST Institute, UMR 6174 CNRS, University of Franche-Comte, Belfort, France;*

(Received 00 Month 20XX; final version received 00 Month 20XX)

The most important problem in a Wireless Sensor Network (WSN) is to optimize the use of its limited energy provision, so that it can fulfill its monitoring task as long as possible. Among known available approaches that can be used to improve power management, lifetime coverage optimization provides activity scheduling which ensures sensing coverage while minimizing the energy cost. We propose such an approach called Perimeter-based Coverage Optimization protocol (PeCO). It is a hybrid of centralized and distributed methods: the region of interest is first subdivided into subregions and our protocol is then distributed among sensor nodes in each subregion. The novelty of our approach lies essentially in the formulation of a new mathematical optimization model based on the perimeter coverage level to schedule sensors' activities. Extensive simulation experiments demonstrate that PeCO can offer longer lifetime coverage for WSNs in comparison with some other protocols.

Keywords: Wireless Sensor Networks, Area Coverage, Energy efficiency, Optimization, Scheduling.

1. Introduction

The continuous progress in Micro Electro-Mechanical Systems (MEMS) and wireless communication hardware has given rise to the opportunity to use large networks of tiny sensors, called Wireless Sensor Networks (WSN) (Akyildiz et al. 2002; Puccinelli and Haenggi 2005), to fulfill monitoring tasks. A WSN consists of small low-powered sensors working together by communicating with one another through multi-hop radio communications. Each node can send the data it collects in its environment, thanks to its sensor, to the user by means of sink nodes. The features of a WSN made it suitable for a wide range of application in areas such as business, environment, health, industry, military, and so on (Yick, Mukherjee, and Ghosal 2008). Typically, a sensor node contains three main components (Anastasi et al. 2009): a sensing unit able to measure physical, chemical, or biological phenomena observed in the environment; a processing unit which will process and store the collected measurements; a radio communication unit for data transmission and receiving.

The energy needed by an active sensor node to perform sensing, processing, and communication is supplied by a power supply which is a battery. This battery has a limited energy provision and it may be unsuitable or impossible to replace or recharge it in most applications. Therefore it is necessary to deploy WSN with high density in order to increase reliability and to exploit node redundancy thanks to energy-efficient activity scheduling approaches. Indeed, the overlap of sensing areas can be exploited

*Corresponding author. Email: karine.deschinkel@univ-fcomte.fr

to schedule alternatively some sensors in a low power sleep mode and thus save energy. Overall, the main question that must be answered is: how to extend the lifetime coverage of a WSN as long as possible while ensuring a high level of coverage? These past few years many energy-efficient mechanisms have been suggested to retain energy and extend the lifetime of the WSNs (Rault, Bouabdallah, and Challal 2014).

This paper makes the following contributions.

- (1) We have devised a framework to schedule nodes to be activated alternatively such that the network lifetime is prolonged while ensuring that a certain level of coverage is preserved. A key idea in our framework is to exploit spatial and temporal subdivision. On the one hand, the area of interest is divided into several smaller subregions and, on the other hand, the time line is divided into periods of equal length. In each subregion the sensor nodes will cooperatively choose a leader which will schedule nodes' activities, and this grouping of sensors is similar to typical cluster architecture.
- (2) We have proposed a new mathematical optimization model. Instead of trying to cover a set of specified points/targets as in most of the methods proposed in the literature, we formulate an integer program based on perimeter coverage of each sensor. The model involves integer variables to capture the deviations between the actual level of coverage and the required level. Hence, an optimal scheduling will be obtained by minimizing a weighted sum of these deviations.
- (3) We have conducted extensive simulation experiments, using the discrete event simulator OMNeT++, to demonstrate the efficiency of our protocol. We have compared our PeCO protocol to two approaches found in the literature: DESK (Vu et al. 2006) and GAF (Xu, Heidemann, and Estrin 2001), and also to our previous work published in (Idrees et al. 2014b) which is based on another optimization model for sensor scheduling.

The rest of the paper is organized as follows. In the next section we review some related work in the field. Section 3 is devoted to the PeCO protocol description and Section 4 focuses on the coverage model formulation which is used to schedule the activation of sensor nodes. Section 5 presents simulations results and discusses the comparison with other approaches. Finally, concluding remarks are drawn and some suggestions are given for future works in Section 6.

2. Related Literature

In this section, we summarize some related works regarding the coverage problem and distinguish our PeCO protocol from the works presented in the literature.

The most discussed coverage problems in literature can be classified in three categories (Li and Vasilakos 2013) according to their respective monitoring objective. Hence, area coverage (Misra, Kumar, and Obaidat 2011) means that every point inside a fixed area must be monitored, while target coverage (Yang and Chin 2014a) refers to the objective of coverage for a finite number of discrete points called targets, and barrier coverage (He et al. 2014; Kim and Cobb 2013) focuses on preventing intruders from entering into the region of interest. In (Deng, Jiguo Yu, and Chen 2012) authors transform the area coverage problem into the target coverage one taking into account the intersection points among disks of sensors nodes or between disk of sensor nodes and boundaries. In (Huang and Tseng 2005a) authors prove that if the perimeters of sensors are sufficiently covered it will be the case for the whole area. They provide an algorithm in $O(nd \log d)$ time to compute the perimeter-coverage of each sensor, where d denotes the maximum number of sensors that are neighbors to a sensor and n is the total number of sensors

in the network. *In PeCO protocol, instead of determining the level of coverage of a set of discrete points, our optimization model is based on checking the perimeter-coverage of each sensor to activate a minimal number of sensors.*

The major approach to extend network lifetime while preserving coverage is to divide/organize the sensors into a suitable number of set covers (disjoint or non-disjoint)(Wang 2011), where each set completely covers a region of interest, and to activate these set covers successively. The network activity can be planned in advance and scheduled for the entire network lifetime or organized in periods, and the set of active sensor nodes is decided at the beginning of each period (Ling and Znati 2009). Active node selection is determined based on the problem requirements (e.g. area monitoring, connectivity, or power efficiency). For instance, Jaggi and Abouzeid (2006) address the problem of maximizing the lifetime by dividing sensors into the maximum number of disjoint subsets such that each subset can ensure both coverage and connectivity. A greedy algorithm is applied once to solve this problem and the computed sets are activated in succession to achieve the desired network lifetime. Vu (2009), Yan et al. (2008), Padmavathy and Chitra (2010), propose algorithms working in a periodic fashion where a cover set is computed at the beginning of each period. *Motivated by these works, PeCO protocol works in periods, where each period contains a preliminary phase for information exchange and decisions, followed by a sensing phase where one cover set is in charge of the sensing task.*

Various centralized and distributed approaches, or even a mixing of these two concepts, have been proposed to extend the network lifetime (Zhou, Das, and Gupta 2009). In distributed algorithms (Tian and Georganas 2002; Yang and Chin 2014b; Vu et al. 2006; Qu and Georgakopoulos 2013) each sensor decides of its own activity scheduling after an information exchange with its neighbors. The main interest of such an approach is to avoid long range communications and thus to reduce the energy dedicated to the communications. Unfortunately, since each node has only information on its immediate neighbors (usually the one-hop ones) it may make a bad decision leading to a global sub-optimal solution. Conversely, centralized algorithms (Cardei and Du 2005; Zorbas et al. 2010; Pujari 2011) always provide nearly or close to optimal solution since the algorithm has a global view of the whole network. The disadvantage of a centralized method is obviously its high cost in communications needed to transmit to a single node, the base station which will globally schedule nodes' activities, data from all the other sensor nodes in the area. The price in communications can be huge since long range communications will be needed. In fact the larger the WNS is, the higher the communication and thus the energy cost are. *In order to be suitable for large-scale networks, in the PeCO protocol, the area of interest is divided into several smaller subregions, and in each one, a node called the leader is in charge of selecting the active sensors for the current period. Thus our protocol is scalable and is a globally distributed method, whereas it is centralized in each subregion.*

Various coverage scheduling algorithms have been developed these past few years. Many of them, dealing with the maximization of the number of cover sets, are heuristics. These heuristics involve the construction of a cover set by including in priority the sensor nodes which cover critical targets, that is to say targets that are covered by the smallest number of sensors (Berman and Calinescu 2004; Zorbas et al. 2010). Other approaches are based on mathematical programming formulations (Cardei et al. 2005; Xing, Li, and Wang 2010; Pujari 2011; Yang and Liu 2014) and dedicated techniques (solving with a branch-and-bound algorithm available in optimization solver). The problem is formulated as an optimization problem (maximization of the lifetime or number of cover sets) under target coverage and energy constraints. Column generation techniques, well-known and widely practiced techniques for solving linear programs with too many variables, have also been used (Castaño et al. 2013; Singh, Rossi, and Sevaux 2013; Deschinkel 2012).

In the PeCO protocol, each leader, in charge of a subregion, solves an integer program which has a twofold objective: minimize the overcoverage and the undercoverage of the perimeter of each sensor.

3. The PeCO Protocol Description

In this section, we describe in details our Perimeter-based Coverage Optimization protocol. First we present the assumptions we made and the models we considered (in particular the perimeter coverage one), second we describe the background idea of our protocol, and third we give the outline of the algorithm executed by each node.

3.1 Assumptions and Models

A WSN consisting of J stationary sensor nodes randomly and uniformly distributed in a bounded sensor field is considered. The wireless sensors are deployed in high density to ensure initially a high coverage ratio of the area of interest. We assume that all the sensor nodes are homogeneous in terms of communication, sensing, and processing capabilities and heterogeneous from the energy provision point of view. The location information is available to a sensor node either through hardware such as embedded GPS or location discovery algorithms. We assume that each sensor node can directly transmit its measurements to a mobile sink node. For example, a sink can be an unmanned aerial vehicle (UAV) flying regularly over the sensor field to collect measurements from sensor nodes. A mobile sink node collects the measurements and transmits them to the base station. We consider a Boolean disk coverage model, which is the most widely used sensor coverage model in the literature, and all sensor nodes have a constant sensing range R_s . Thus, all the space points within a disk centered at a sensor with a radius equal to the sensing range are said to be covered by this sensor. We also assume that the communication range R_c satisfies $R_c \geq 2 \cdot R_s$. In fact, Zhang and Hou (2005) proved that if the transmission range fulfills the previous hypothesis, the complete coverage of a convex area implies connectivity among active nodes.

The PeCO protocol uses the same perimeter-coverage model as Huang and Tseng (2005b). It can be expressed as follows: a sensor is said to be perimeter covered if all the points on its perimeter are covered by at least one sensor other than itself. They proved that a network area is k -covered if and only if each sensor in the network is k -perimeter-covered (perimeter covered by at least k sensors).

Figure 1(a) shows the coverage of sensor node 0. On this figure, we can see that sensor 0 has nine neighbors and we have reported on its perimeter (the perimeter of the disk covered by the sensor) for each neighbor the two points resulting from the intersection of the two sensing areas. These points are denoted for neighbor i by iL and iR , respectively for left and right from a neighboring point of view. The resulting couples of intersection points subdivide the perimeter of sensor 0 into portions called arcs.

Figure 1(b) describes the geometric information used to find the locations of the left and right points of an arc on the perimeter of a sensor node u covered by a sensor node v . Node v is supposed to be located on the west side of sensor u , with the following respective coordinates in the sensing area : (v_x, v_y) and (u_x, u_y) . From the previous coordinates we can compute the euclidean distance between nodes u and v : $Dist(u, v) = \sqrt{|u_x - v_x|^2 + |u_y - v_y|^2}$, while the angle α is obtained through the formula:

$$\alpha = \arccos \left(\frac{Dist(u, v)}{2R_s} \right).$$

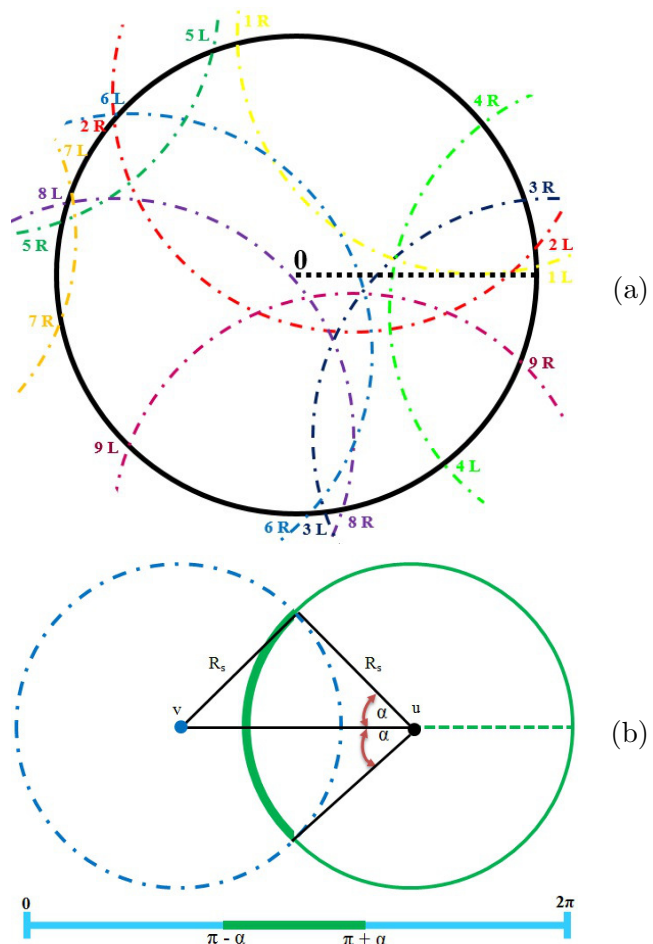


Figure 1. (a) Perimeter coverage of sensor node 0 and (b) finding the arc of u 's perimeter covered by v .

The arc on the perimeter of u defined by the angular interval $[\pi - \alpha, \pi + \alpha]$ is said to be perimeter-covered by sensor v .

Every couple of intersection points is placed on the angular interval $[0, 2\pi]$ in a counterclockwise manner, leading to a partitioning of the interval. Figure 1(a) illustrates the arcs for the nine neighbors of sensor 0 and figure 2 gives the position of the corresponding arcs in the interval $[0, 2\pi]$. More precisely, we can see that the points are ordered according to the measures of the angles defined by their respective positions. The intersection points are then visited one after another, starting from the first intersection point after point zero, and the maximum level of coverage is determined for each interval defined by two successive points. The maximum level of coverage is equal to the number of overlapping arcs. For example, between $5L$ and $6L$ the maximum level of coverage is equal to 3 (the value is highlighted in yellow at the bottom of figure 2), which means that at most 2 neighbors can cover the perimeter in addition to node 0. Table 1 summarizes for each coverage interval the maximum level of coverage and the sensor nodes covering the perimeter. The example discussed above is thus given by the sixth line of the table.

In the PeCO protocol, the scheduling of the sensor nodes' activities is formulated with an integer program based on coverage intervals. The formulation of the coverage optimization problem is detailed in section 4. Note that when a sensor node has a part of its sensing range outside the WSN sensing field, as in figure 3, the maximum coverage level for this arc is set to ∞ and the corresponding interval will not be taken into account by the optimization algorithm.

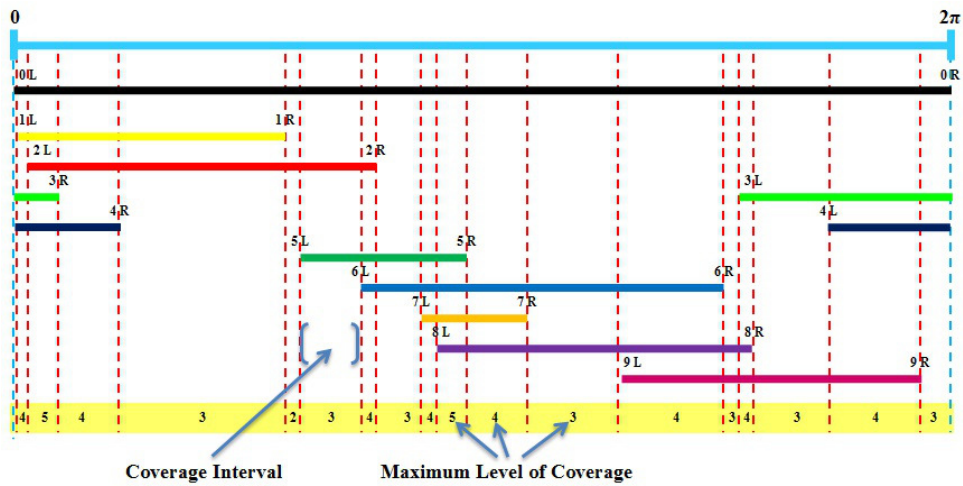


Figure 2. Maximum coverage levels for perimeter of sensor node 0.

Table 1. Coverage intervals and contributing sensors for sensor node 0

Left point angle α	Interval left point	Interval right point	Maximum coverage level	Set of sensors involved in coverage interval					
0.0291	1L	2L	4	0	1	3	4		
0.104	2L	3R	5	0	1	3	4	2	
0.3168	3R	4R	4	0	1	4	2		
0.6752	4R	1R	3	0	1	2			
1.8127	1R	5L	2	0	2				
1.9228	5L	6L	3	0	2	5			
2.3959	6L	2R	4	0	2	5	6		
2.4258	2R	7L	3	0	5	6			
2.7868	7L	8L	4	0	5	6	7		
2.8358	8L	5R	5	0	5	6	7	8	
2.9184	5R	7R	4	0	6	7	8		
3.3301	7R	9R	3	0	6	8			
3.9464	9R	6R	4	0	6	8	9		
4.767	6R	3L	3	0	8	9			
4.8425	3L	8R	4	0	3	8	9		
4.9072	8R	4L	3	0	3	9			
5.3804	4L	9R	4	0	3	4	9		
5.9157	9R	1L	3	0	3	4			

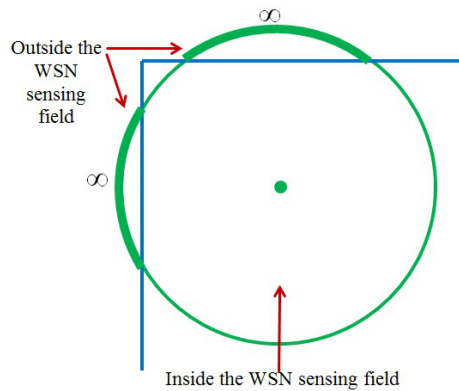


Figure 3. Sensing range outside the WSN's area of interest.

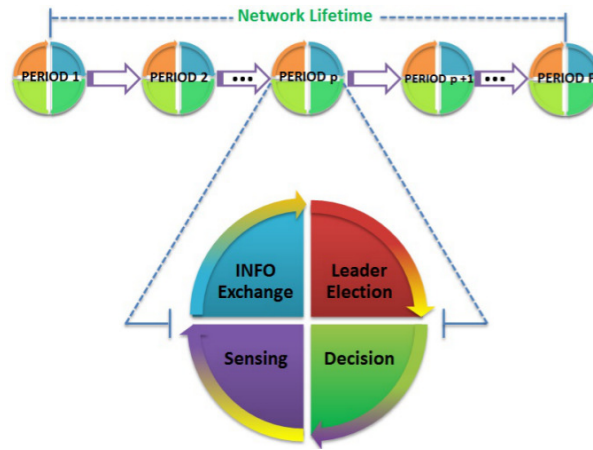


Figure 4. PeCO protocol.

3.2 The Main Idea

The WSN area of interest is, in a first step, divided into regular homogeneous subregions using a divide-and-conquer algorithm. In a second step our protocol will be executed in a distributed way in each subregion simultaneously to schedule nodes' activities for one sensing period.

As shown in figure 4, node activity scheduling is produced by our protocol in a periodic manner. Each period is divided into 4 stages: Information (INFO) Exchange, Leader Election, Decision (the result of an optimization problem), and Sensing. For each period there is exactly one set cover responsible for the sensing task. Protocols based on a periodic scheme, like PeCO, are more robust against an unexpected node failure. On the one hand, if a node failure is discovered before taking the decision, the corresponding sensor node will not be considered by the optimization algorithm. On the other hand, if the sensor failure happens after the decision, the sensing task of the network will be temporarily affected: only during the period of sensing until a new period starts, since a new set cover will take charge of the sensing task in the next period. The energy consumption and some other constraints can easily be taken into account since the sensors can update and then exchange their information (including their residual energy) at the beginning of each period. However, the pre-sensing phases (INFO Exchange, Leader Election, and Decision) are energy consuming, even for nodes that will not join the set cover to monitor the area.

We define two types of packets to be used by PeCO protocol:

- INFO packet: sent by each sensor node to all the nodes inside a same subregion for information exchange.
- ActiveSleep packet: sent by the leader to all the nodes in its subregion to transmit to them their respective status (stay Active or go Sleep) during sensing phase.

Five status are possible for a sensor node in the network:

- LISTENING: waits for a decision (to be active or not);
- COMPUTATION: executes the optimization algorithm as leader to determine the activities scheduling;
- ACTIVE: node is sensing;
- SLEEP: node is turned off;
- COMMUNICATION: transmits or receives packets.

3.3 PeCO Protocol Algorithm

The pseudocode implementing the protocol on a node is given below. More precisely, Algorithm 1 gives a brief description of the protocol applied by a sensor node s_k where k is the node index in the WSN.

Algorithm 1

```

If  $RE_k \geq E_{th}$  then
   $s_k.status = COMMUNICATION$ ;
  Send INFO() packet to other nodes in subregion;
  Wait INFO() packet from other nodes in subregion;
  Update  $K.CurrentSize$ ;
   $LeaderID = Leader\ election$ ;
  If  $s_k.ID = LeaderID$  then
     $s_k.status = COMPUTATION$ ;
    If  $s_k.ID$  is Not previously selected as a Leader then
      Execute the perimeter coverage model;
    end
    If ( $s_k.ID$  is the same Previous Leader) And ( $K.CurrentSize = K.PreviousSize$ )
      Use the same previous cover set for current sensing stage;
    end
    else
      Update  $a_{ik}^j$ ; prepare data for IP Algorithm;
       $\{(X_1, \dots, X_l, \dots, X_K)\} = Execute\ Integer\ Program\ Algorithm(K)$ ;
       $K.PreviousSize = K.CurrentSize$ ;
    end
     $s_k.status = COMMUNICATION$ ;
    Send ActiveSleep() to each node  $l$  in subregion;
    Update  $RE_k$ ;
  end
  else
     $s_k.status = LISTENING$ ;
    Wait ActiveSleep() packet from the Leader;
    Update  $RE_k$ ;
  end
end
else
  Exclude  $s_k$  from entering in the current sensing stage;
end

```

In this algorithm, $K.CurrentSize$ and $K.PreviousSize$ respectively represent the current number and the previous number of living nodes in the subnetwork of the subregion. Initially, the sensor node checks its remaining energy RE_k , which must be greater than a threshold E_{th} in order to participate in the current period. Each sensor node determines its position and its subregion using an embedded GPS or a location discovery algorithm. After that, all the sensors collect position coordinates, remaining energy, sensor node ID, and the number of their one-hop live neighbors during the information exchange. The sensors inside a same region cooperate to elect a leader. The selection criteria for the leader, in order of priority, are: larger numbers of neighbors, larger remaining energy, and then in case of equality, larger index. Once chosen, the leader collects information to formulate and solve the integer program which allows to construct the set of active sensors in the sensing stage.

4. Perimeter-based Coverage Problem Formulation

In this section, the coverage model is mathematically formulated. We start with a description of the notations that will be used throughout the section.

First, we have the following sets:

- S represents the set of WSN sensor nodes;
- $A \subseteq S$ is the subset of alive sensors;
- I_j designates the set of coverage intervals (CI) obtained for sensor j .

I_j refers to the set of coverage intervals which have been defined according to the method introduced in subsection 3.1. For a coverage interval i , let α_{ik}^j denotes the indicator function of whether sensor k is involved in coverage interval i of sensor j , that is:

$$\alpha_{ik}^j = \begin{cases} 1 & \text{if sensor } k \text{ is involved in the} \\ & \text{coverage interval } i \text{ of sensor } j, \\ 0 & \text{otherwise.} \end{cases} \quad (1)$$

Note that $\alpha_{ik}^k = 1$ by definition of the interval.

Second, we define several binary and integer variables. Hence, each binary variable X_k determines the activation of sensor k in the sensing phase ($X_k = 1$ if the sensor k is active or 0 otherwise). M_i^j is an integer variable which measures the undercoverage for the coverage interval i corresponding to sensor j . In the same way, the overcoverage for the same coverage interval is given by the variable V_i^j .

If we decide to sustain a level of coverage equal to l all along the perimeter of sensor j , we have to ensure that at least l sensors involved in each coverage interval $i \in I_j$ of sensor j are active. According to the previous notations, the number of active sensors in the coverage interval i of sensor j is given by $\sum_{k \in A} \alpha_{ik}^j X_k$. To extend the network lifetime, the objective is to activate a minimal number of sensors in each period to ensure the desired coverage level. As the number of alive sensors decreases, it becomes impossible to reach the desired level of coverage for all coverage intervals. Therefore we use variables M_i^j and V_i^j as a measure of the deviation between the desired number of active sensors in a coverage interval and the effective number. And we try to minimize these deviations, first to force the activation of a minimal number of sensors to ensure the desired coverage level, and if the desired level cannot be completely satisfied, to reach a coverage level as close as possible to the desired one.

Our coverage optimization problem can then be mathematically expressed as follows:

$$\begin{cases} \min \sum_{j \in S} \sum_{i \in I_j} (\alpha_i^j M_i^j + \beta_i^j V_i^j) \\ \text{subject to :} \\ \sum_{k \in A} (\alpha_{ik}^j X_k) + M_i^j \geq l \quad \forall i \in I_j, \forall j \in S \\ \sum_{k \in A} (\alpha_{ik}^j X_k) - V_i^j \leq l \quad \forall i \in I_j, \forall j \in S \\ X_k \in \{0, 1\}, \forall k \in A \end{cases} \quad (2)$$

α_i^j and β_i^j are nonnegative weights selected according to the relative importance of satisfying the associated level of coverage. For example, weights associated with coverage intervals of a specified part of a region may be given by a relatively larger magnitude than weights associated with another region. This kind of integer program is inspired from the model developed for brachytherapy treatment planning for optimizing dose distribution (Lee et al. 1999). The integer program must be solved by the leader in each subregion at the beginning of each sensing phase, whenever the environment has changed (new leader,

death of some sensors). Note that the number of constraints in the model is constant (constraints of coverage expressed for all sensors), whereas the number of variables X_k decreases over periods, since we consider only alive sensors (sensors with enough energy to be alive during one sensing phase) in the model.

5. Performance Evaluation and Analysis

5.1 Simulation Settings

The WSN area of interest is supposed to be divided into 16 regular subregions and we use the same energy consumption than in our previous work (Idrees et al. 2014b). Table 2 gives the chosen parameters settings.

Table 2. Relevant parameters for network initialization

Parameter	Value
Sensing field	$(50 \times 25) m^2$
WSN size	100, 150, 200, 250, and 300 nodes
Initial energy	in range 500-700 Joules
Sensing period	duration of 60 minutes
E_{th}	36 Joules
R_s	5 m
α_i^j	0.6
β_i^j	0.4

To obtain experimental results which are relevant, simulations with five different node densities going from 100 to 300 nodes were performed considering each time 25 randomly generated networks. The nodes are deployed on a field of interest of $(50 \times 25) m^2$ in such a way that they cover the field with a high coverage ratio. Each node has an initial energy level, in Joules, which is randomly drawn in the interval $[500 - 700]$. If its energy provision reaches a value below the threshold $E_{th} = 36$ Joules, the minimum energy needed for a node to stay active during one period, it will no more participate in the coverage task. This value corresponds to the energy needed by the sensing phase, obtained by multiplying the energy consumed in active state (9.72 mW) with the time in seconds for one period (3600 seconds), and adding the energy for the pre-sensing phases. According to the interval of initial energy, a sensor may be active during at most 20 periods.

The values of α_i^j and β_i^j have been chosen to ensure a good network coverage and a longer WSN lifetime. We have given a higher priority to the undercoverage (by setting the α_i^j with a larger value than β_i^j) so as to prevent the non-coverage for the interval i of the sensor j . On the other hand, we have assigned to β_i^j a value which is slightly lower so as to minimize the number of active sensor nodes which contribute in covering the interval.

We introduce the following performance metrics to evaluate the efficiency of our approach.

- **Network Lifetime:** the lifetime is defined as the time elapsed until the coverage ratio falls below a fixed threshold. $Lifetime_{95}$ and $Lifetime_{50}$ denote, respectively, the amount of time during which is guaranteed a level of coverage greater than 95% and 50%. The WSN can fulfill the expected monitoring task until all its nodes have depleted their energy or if the network is no more connected. This last condition is crucial because without network connectivity a sensor may not be able to send to a base station an event it has sensed.
- **Coverage Ratio (CR) :** it measures how well the WSN is able to observe the area of interest. In our case, we discretized the sensor field as a regular grid, which yields

the following equation:

$$\text{CR}(\%) = \frac{n}{N} \times 100$$

where n is the number of covered grid points by active sensors of every subregions during the current sensing phase and N is total number of grid points in the sensing field. In our simulations we have set a layout of $N = 51 \times 26 = 1326$ grid points.

- **Active Sensors Ratio (ASR):** a major objective of our protocol is to activate as few nodes as possible, in order to minimize the communication overhead and maximize the WSN lifetime. The active sensors ratio is defined as follows:

$$\text{ASR}(\%) = \frac{\sum_{r=1}^R |A_r^p|}{|S|} \times 100$$

where $|A_r^p|$ is the number of active sensors in the subregion r in the current sensing period p , $|S|$ is the number of sensors in the network, and R is the number of subregions.

- **Energy Consumption (EC):** energy consumption can be seen as the total energy consumed by the sensors during $Lifetime_{95}$ or $Lifetime_{50}$, divided by the number of periods. The value of EC is computed according to this formula:

$$\text{EC} = \frac{\sum_{p=1}^P (E_p^{\text{com}} + E_p^{\text{list}} + E_p^{\text{comp}} + E_p^a + E_p^s)}{P},$$

where P corresponds to the number of periods. The total energy consumed by the sensors comes through taking into consideration four main energy factors. The first one, denoted E_p^{com} , represents the energy consumption spent by all the nodes for wireless communications during period p . E_p^{list} , the next factor, corresponds to the energy consumed by the sensors in LISTENING status before receiving the decision to go active or sleep in period p . E_p^{comp} refers to the energy needed by all the leader nodes to solve the integer program during a period. Finally, E_p^a and E_p^s indicate the energy consumed by the WSN during the sensing phase (active and sleeping nodes).

5.2 Simulation Results

In order to assess and analyze the performance of our protocol we have implemented PeCO protocol in OMNeT++ (Varga 2003) simulator. Besides PeCO, two other protocols, described in the next paragraph, will be evaluated for comparison purposes. The simulations were run on a DELL laptop with an Intel Core i3 2370 M (1.8 GHz) processor (2 cores) whose MIPS (Million Instructions Per Second) rate is equal to 35330. To be consistent with the use of a sensor node based on Atmels AVR ATmega103L microcontroller (6 MHz) having a MIPS rate equal to 6, the original execution time on the laptop is multiplied by 2944.2 ($\frac{35330}{2} \times \frac{1}{6}$). The modeling language for Mathematical Programming (AMPL) (Fourer, Gay, and Kernighan November 12, 2002) is employed to generate the integer program instance in a standard format, which is then read and solved by the optimization solver GLPK (GNU linear Programming Kit available in the public domain) (Makhorn 2012) through a Branch-and-Bound method.

As said previously, the PeCO is compared to three other approaches. The first one, called DESK, is a fully distributed coverage algorithm proposed by (Vu et al. 2006). The second one, called GAF (Xu, Heidemann, and Estrin 2001), consists in dividing the monitoring area into fixed squares. Then, during the decision phase, in each square, one sensor is chosen to remain active during the sensing phase. The last one, the DiLCO protocol (Idrees et al. 2014b), is an improved version of a research work we presented in (Idrees et al. 2014a). Let us notice that PeCO and DiLCO protocols are based on the same framework. In particular, the choice for the simulations of a partitioning in 16 subregions was made because it corresponds to the configuration producing the best results for DiLCO. The protocols are distinguished from one another by the formulation of the integer program providing the set of sensors which have to be activated in each sensing phase. DiLCO protocol tries to satisfy the coverage of a set of primary points, whereas the PeCO protocol objective is to reach a desired level of coverage for each sensor perimeter. In our experimentations, we chose a level of coverage equal to one ($l = 1$).

5.2.1 Coverage Ratio

Figure 5 shows the average coverage ratio for 200 deployed nodes obtained with the four protocols. DESK, GAF, and DiLCO provide a slightly better coverage ratio with respectively 99.99%, 99.91%, and 99.02%, compared to the 98.76% produced by PeCO for the first periods. This is due to the fact that at the beginning the DiLCO protocol puts to sleep status more redundant sensors (which slightly decreases the coverage ratio), while the three other protocols activate more sensor nodes. Later, when the number of periods is beyond 70, it clearly appears that PeCO provides a better coverage ratio and keeps a coverage ratio greater than 50% for longer periods (15 more compared to DiLCO, 40 more compared to DESK). The energy saved by PeCO in the early periods allows later a substantial increase of the coverage performance.

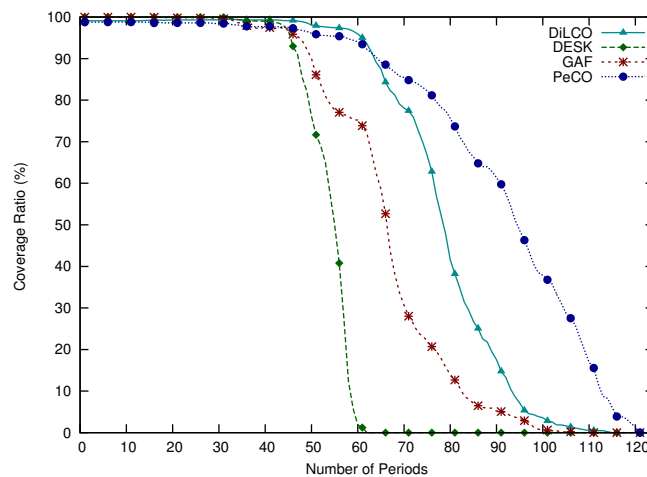


Figure 5. Coverage ratio for 200 deployed nodes.

5.2.2 Active Sensors Ratio

Having the less active sensor nodes in each period is essential to minimize the energy consumption and thus to maximize the network lifetime. Figure 6 shows the average active nodes ratio for 200 deployed nodes. We observe that DESK and GAF have 30.36 % and 34.96 % active nodes for the first fourteen rounds and DiLCO and PeCO protocols compete perfectly with only 17.92 % and 20.16 % active nodes during the same time interval. As the number of periods increases, PeCO protocol has a lower number of active nodes in comparison with the three other approaches, while keeping a greater

coverage ratio as shown in figure 5.

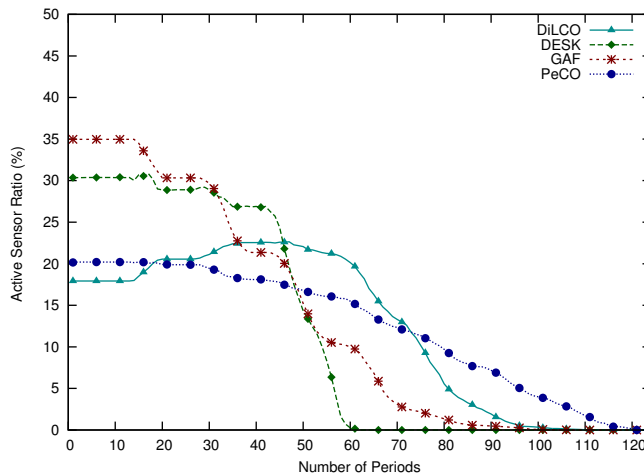


Figure 6. Active sensors ratio for 200 deployed nodes.

5.2.3 Energy Consumption

We studied the effect of the energy consumed by the WSN during the communication, computation, listening, active, and sleep status for different network densities and compared it for the four approaches. Figures 7(a) and (b) illustrate the energy consumption for different network sizes and for *Lifetime95* and *Lifetime50*. The results show that our PeCO protocol is the most competitive from the energy consumption point of view. As shown in both figures, PeCO consumes much less energy than the three other methods. One might think that the resolution of the integer program is too costly in energy, but the results show that it is very beneficial to lose a bit of time in the selection of sensors to activate. Indeed the optimization program allows to reduce significantly the number of active sensors and so the energy consumption while keeping a good coverage level.

5.2.4 Network Lifetime

We observe the superiority of PeCO and DiLCO protocols in comparison with the two other approaches in prolonging the network lifetime. In Figures 8(a) and (b), *Lifetime95* and *Lifetime50* are shown for different network sizes. As highlighted by these figures, the lifetime increases with the size of the network, and it is clearly largest for DiLCO and PeCO protocols. For instance, for a network of 300 sensors and coverage ratio greater than 50%, we can see on figure 8(b) that the lifetime is about twice longer with PeCO compared to DESK protocol. The performance difference is more obvious in figure 8(b) than in figure 8(a) because the gain induced by our protocols increases with time, and the lifetime with a coverage of 50% is far longer than with 95%.

Figure 9 compares the lifetime coverage of our protocols for different coverage ratios. We denote by Protocol/50, Protocol/80, Protocol/85, Protocol/90, and Protocol/95 the amount of time during which the network can satisfy an area coverage greater than 50%, 80%, 85%, 90%, and 95% respectively, where the term Protocol refers to DiLCO or PeCO. Indeed there are applications that do not require a 100% coverage of the area to be monitored. PeCO might be an interesting method since it achieves a good balance between a high level coverage ratio and network lifetime. PeCO always outperforms DiLCO for the three lower coverage ratios, moreover the improvements grow with the network size. DiLCO is better for coverage ratios near 100%, but in that case PeCO is not ineffective for the smallest network sizes.

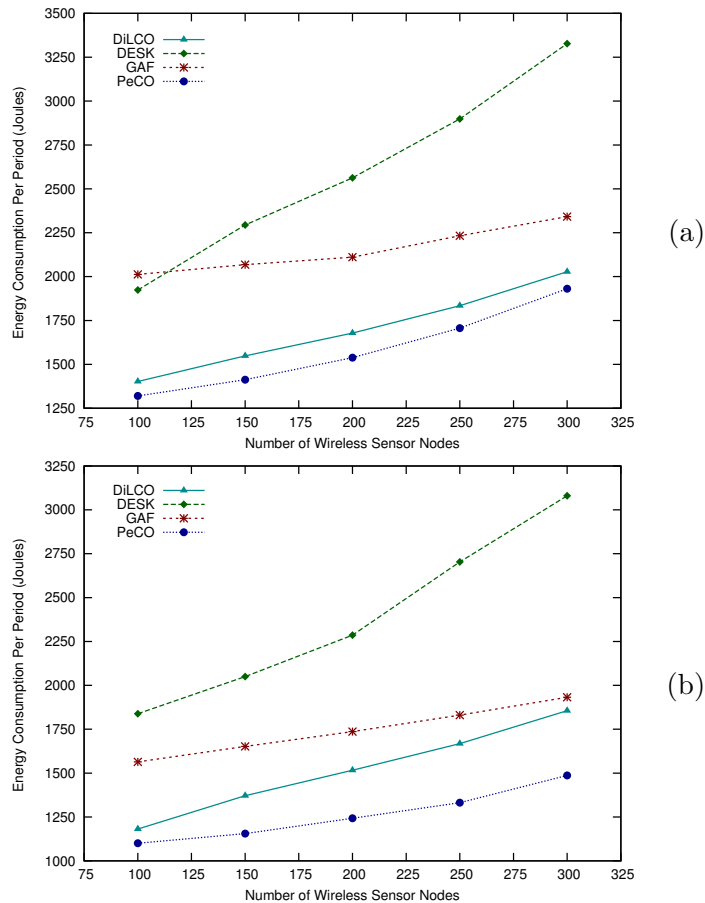


Figure 7. Energy consumption per period for (a) $Lifetime_{95}$ and (b) $Lifetime_{50}$.

6. Conclusion and Future Works

In this paper we have studied the problem of Perimeter-based Coverage Optimization in WSNs. We have designed a new protocol, called Perimeter-based Coverage Optimization, which schedules nodes' activities (wake up and sleep stages) with the objective of maintaining a good coverage ratio while maximizing the network lifetime. This protocol is applied in a distributed way in regular subregions obtained after partitioning the area of interest in a preliminary step. It works in periods and is based on the resolution of an integer program to select the subset of sensors operating in active status for each period. Our work is original in so far as it proposes for the first time an integer program scheduling the activation of sensors based on their perimeter coverage level, instead of using a set of targets/points to be covered.

We have carried out several simulations to evaluate the proposed protocol. The simulation results show that PeCO is more energy-efficient than other approaches, with respect to lifetime, coverage ratio, active sensors ratio, and energy consumption.

We plan to extend our framework so that the schedules are planned for multiple sensing periods.

We also want to improve our integer program to take into account heterogeneous sensors from both energy and node characteristics point of views.

Finally, it would be interesting to implement our protocol using a sensor-testbed to evaluate it in real world applications.

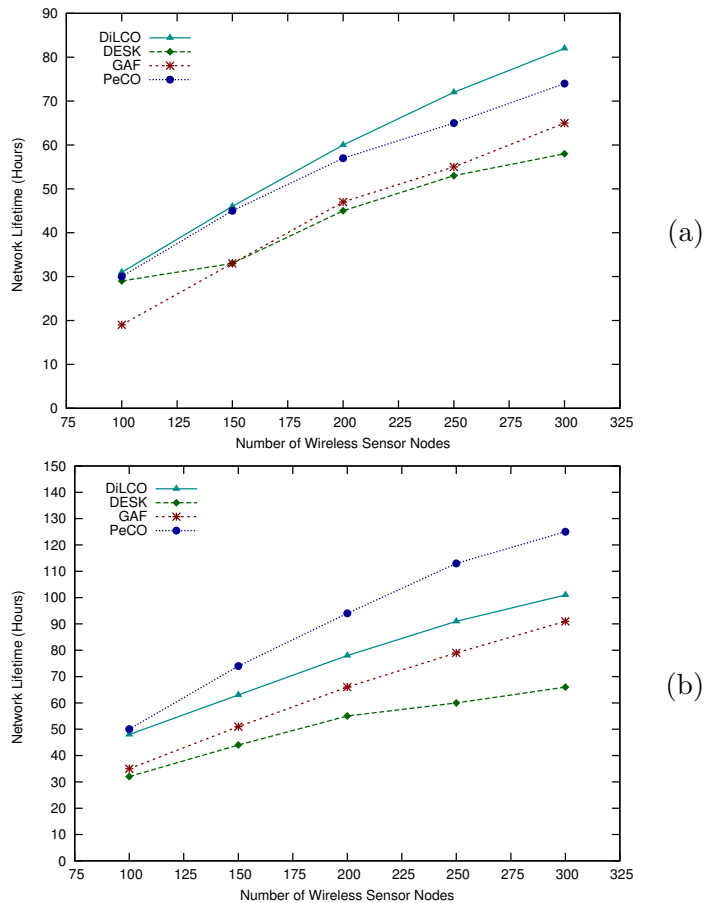


Figure 8. Network Lifetime for (a) $Lifetime_{95}$ and (b) $Lifetime_{50}$.

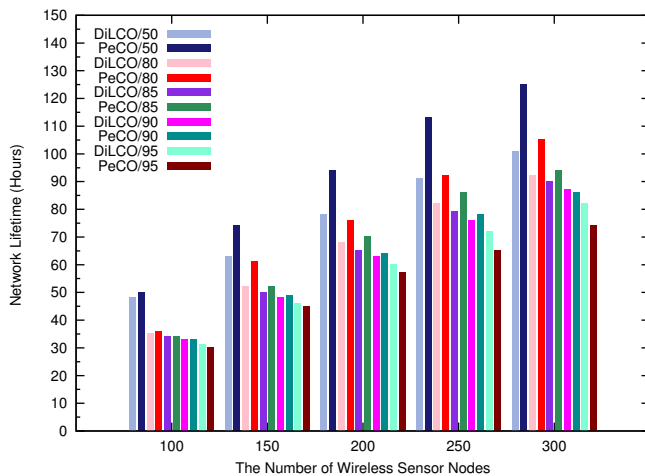


Figure 9. Network lifetime for different coverage ratios.

References

Akyildiz, Ian F, Weilian Su, Yogesh Sankarasubramaniam, and Erdal Cayirci. 2002. “Wireless sensor networks: a survey.” *Computer networks* 38 (4): 393–422.

Anastasi, Giuseppe, Marco Conti, Mario Di Francesco, and Andrea Passarella. 2009. “Energy conservation in wireless sensor networks: A survey.” *Ad Hoc Networks* 7 (3): 537–568.

Berman, P., and G. Calinescu. 2004. “Power Efficient Monitoring Management in Sensor Networks.” In *Proceedings of IEEE Wireless Communication and Networking Conference*

- (WCNC'04), 2329–2334.
- Cardei, Mihaela, and Ding-Zhu Du. 2005. “Improving wireless sensor network lifetime through power aware organization.” *Wireless Networks* 11 (3): 333–340.
- Cardei, Mihaela, My T Thai, Yingshu Li, and Weili Wu. 2005. “Energy-efficient target coverage in wireless sensor networks.” In *INFOCOM 2005. 24th Annual Joint Conference of the IEEE Computer and Communications Societies. Proceedings IEEE*, Vol. 31976–1984. IEEE.
- Castaño, Fabian, André Rossi, Marc Sevaux, and Nubia Velasco. 2013. “A column generation approach to extend lifetime in wireless sensor networks with coverage and connectivity constraints.” *Computers & Operations Research* .
- Deng, Xiu, Dongxiao Yu Jiguo Yu, and Congcong Chen. 2012. “Transforming Area Coverage to Target Coverage to Maintain Coverage and Connectivity for Wireless Sensor Networks.” *International Journal of Distributed Sensor Networks* 2012.
- Deschinkel, Karine. 2012. “A Column Generation based Heuristic to Extend Lifetime in Wireless Sensor Network..” *Sensors & Transducers Journal* 14-2: 242–253.
- Fourer, Robert, David M. Gay, and Brian W. Kernighan. November 12, 2002. *AMPL: A Modeling Language for Mathematical Programming*. 2nd ed. Cengage Learning.
- He, Shibo, Xiaowen Gong, Junshan Zhang, Jiming Chen, and Youxian Sun. 2014. “Curve-Based Deployment for Barrier Coverage in Wireless Sensor Networks.” *Wireless Communications, IEEE Transactions on* 13 (2): 724–735.
- Huang, C.-F., and Y.-C. Tseng. 2005a. “The Coverage Problem in a Wireless Sensor Network.” *Mobile Networks and Applications* 10 (4): 519–528.
- Huang, Chi-Fu, and Yu-Chee Tseng. 2005b. “The coverage problem in a wireless sensor network.” *Mobile Networks and Applications* 10 (4): 519–528.
- Idrees, Ali Kadhum, Karine Deschinkel, Michel Salomon, and Raphaël Couturier. 2014a. “Coverage and Lifetime Optimization in Heterogeneous Energy Wireless Sensor Networks.” In *ICN 2014, The Thirteenth International Conference on Networks*, 49–54.
- Idrees, Ali Kadhum, Karine Deschinkel, Michel Salomon, and Raphaël Couturier. 2014b. *Distributed Lifetime Coverage Optimization Protocol in Wireless Sensor Networks*. Tech. Rep. DISC2014-X. University of Franche-Comte - FEMTO-ST Institute, DISC Research Department.
- Jaggi, N., and A.A. Abouzeid. 2006. “Energy-efficient Connected Coverage in Wireless Sensor Networks.” In *Proceeding of 4th Asian International Mobile Computing Conference AMOC2006*, .
- Kim, Hyunbum, and Jorge A Cobb. 2013. “Maximum lifetime of reinforced barrier-coverage in Wireless Sensor Networks.” In *Networks (ICON), 2013 19th IEEE International Conference on*, 1–6. IEEE.
- Lee, Eva K, Richard J Gallagher, David Silvern, Cheng-Shie Wu, and Marco Zaider. 1999. “Treatment planning for brachytherapy: an integer programming model, two computational approaches and experiments with permanent prostate implant planning.” *Physics in Medicine and Biology* 44 (1): 145. <http://stacks.iop.org/0031-9155/44/i=1/a=012>.
- Li, Mo, and Athanasios V Vasilakos. 2013. “A Survey on Topology Control in Wireless Sensor Networks: Taxonomy, Comparative Study, and Open Issues.” *Proceedings of the IEEE* 101 (12).
- Ling, Hui, and Taieb Znati. 2009. “Energy efficient adaptive sensing for dynamic coverage in wireless sensor networks.” In *Wireless Communications and Networking Conference, 2009. WCNC 2009. IEEE*, 1–6. IEEE.
- Makhorin, Andrew. 2012. “The GLPK (GNU Linear Programming Kit).” Available: <https://www.gnu.org/software/glpk/> .
- Misra, S., M. P. Kumar, and M. S. Obaidat. 2011. “Connectivity preserving localized coverage algorithm for area monitoring using wireless sensor networks.” *Computer Communications* 34 (12): 1484–1496.
- Padmavathy, T.V., and M. Chitra. 2010. “Extending the Network Lifetime of Wireless Sensor Networks Using Residual Energy Extraction-Hybrid Scheduling Algorithm.” *Int. J. of Communications, Network and System Sciences* 3 (1): 98–106.
- Puccinelli, Daniele, and Martin Haenggi. 2005. “Wireless sensor networks: applications and challenges of ubiquitous sensing.” *Circuits and Systems Magazine, IEEE* 5 (3): 19–31.

- Pujari, Arun K. 2011. "High-Energy-First (HEF) Heuristic for Energy-Efficient Target Coverage Problem.." *International Journal of Ad Hoc, Sensor & Ubiquitous Computing* 2 (1).
- Qu, Yipeng, and Stavros V Georgakopoulos. 2013. "A distributed area coverage algorithm for maintenance of randomly distributed sensors with adjustable sensing range." In *Global Communications Conference (GLOBECOM), 2013 IEEE*, 286–291. IEEE.
- Rault, Tifenn, Abdelmadjid Bouabdallah, and Yacine Challal. 2014. "Energy efficiency in wireless sensor networks: A top-down survey." *Computer Networks* 67: 104–122.
- Singh, Alok, Andr Rossi, and Marc Sevaux. 2013. "Matheuristic approaches for Q-coverage problem versions in wireless sensor networks." *Engineering Optimization* 45 (5): 609–626. <http://dx.doi.org/10.1080/0305215X.2012.687732>. <http://dx.doi.org/10.1080/0305215X.2012.687732>.
- Tian, Di, and Nicolas D. Georganas. 2002. "A coverage-preserving node scheduling scheme for large wireless sensor networks." In *Proceedings of the 1st ACM international workshop on Wireless sensor networks and applications, WSNA '02*. 32–41. ACM.
- Varga, A. 2003. "OMNeT++ Discrete Event Simulation System." Available: <http://www.omnetpp.org>.
- Vu, Chinh, Shan Gao, Wiwek Deshmukh, and Yingshu Li. 2006. "Distributed Energy-Efficient Scheduling Approach for K-Coverage in Wireless Sensor Networks." *MILCOM* 0: 1–7.
- Vu, C. T. 2009. "Distributed energy-efficient solutions for area coverage problems in wireless sensor networks." Ph.D. thesis. Georgia State University.
- Wang, Bang. 2011. "Coverage problems in sensor networks: A survey." *ACM Computing Surveys (CSUR)* 43 (4): 32.
- Xing, Xiaofei, Jie Li, and Guojun Wang. 2010. "Integer Programming Scheme for Target Coverage in Heterogeneous Wireless Sensor Networks." In *Mobile Ad-hoc and Sensor Networks (MSN), 2010 Sixth International Conference on*, 79–84. Dec.
- Xu, Ya, John Heidemann, and Deborah Estrin. 2001. "Geography-informed energy conservation for ad hoc routing." In *Proceedings of the 7th annual international conference on Mobile computing and networking*, 70–84. ACM.
- Yan, Ting, Yu Gu, Tian He, and John A Stankovic. 2008. "Design and optimization of distributed sensing coverage in wireless sensor networks." *ACM Transactions on Embedded Computing Systems (TECS)* 7 (3): 33.
- Yang, Changlin, and Kwan-Wu Chin. 2014a. "Novel Algorithms for Complete Targets Coverage in Energy Harvesting Wireless Sensor Networks." *Communications Letters, IEEE* 18 (1): 118–121.
- Yang, Changlin, and Kwan-Wu Chin. 2014b. "A Novel Distributed Algorithm for Complete Targets Coverage in Energy Harvesting Wireless Sensor Networks." In *IEEE ICC 2014- Ad-hoc and Sensor Networking Symposium*, 361–366. IEEE.
- Yang, Mengmeng, and Jie Liu. 2014. "A Maximum Lifetime Coverage Algorithm Based on Linear Programming." *Journal of Information Hiding and dMultimedia Signal Processing, Ubiquitous International* 5 (2): 296–301.
- Yick, Jennifer, Biswanath Mukherjee, and Dipak Ghosal. 2008. "Wireless sensor network survey." *Computer networks* 52 (12): 2292–2330.
- Zhang, H., and J. C. Hou. 2005. "Maintaining Sensing Coverage and Connectivity in Large Sensor Networks." *Ad Hoc & Sensor Wireless Networks* 1 (1-2).
- Zhou, Zongheng, Samir R Das, and Himanshu Gupta. 2009. "Variable radii connected sensor cover in sensor networks." *ACM Transactions on Sensor Networks (TOSN)* 5 (1): 8.
- Zorbas, Dimitrios, Dimitris Glynos, Panayiotis Kotzanikolaou, and Christos Douligeris. 2010. "Solving coverage problems in wireless sensor networks using cover sets." *Ad Hoc Networks* 8 (4): 400–415.